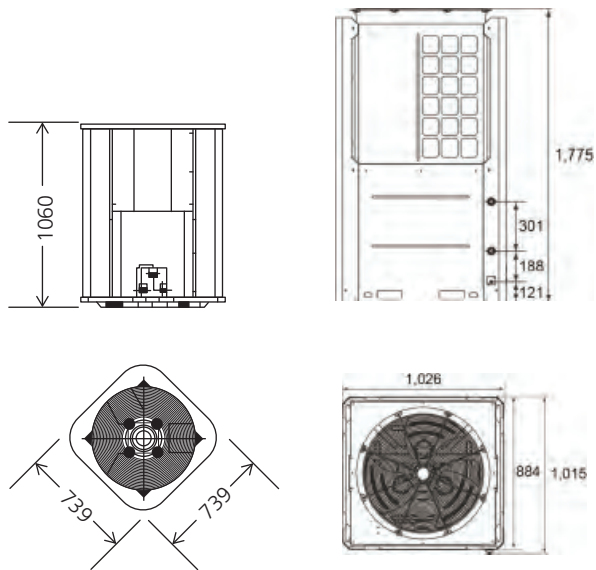


DIRECT & CYCLE HEATING



Mode (Outdoor unit)			REHP 100	REHP 420
Power supply		Ph-V-hz	1-220-50/60	3-380-50/60
Running ambient temp		°C	-7°C~43°	-15°C~46°C
Outwater Temp		°C	Default 56°C, 40°C~60°C	Default 56°C, 40°C~60°C
Water heating	Capacity Input COP Rated. current	kW kW kW/kW A	10.0 2.45 4.1 16	39 9.65 4.04 24
Outdoor unit	Dimension (WxHxD) Packing (WxHxD) Net / Gross Weight	mm mm Kg	750x1100x750 770x1160x770 121 / 129	1015x1775x1026 1070x1900x1030 323 / 343
Outdoor noise level		dB(A)	58	68
Refrigerant type/Quantity		kg	R410A / 1.6	R410A / 4.4 X 2
Compressor	Model Type Brand Capacity Input		ZR34KH-PFJ-522 SCROLL COPELAND 28000 Btu 2.5	ZP120KCE-TFD-522 SCROLL COPELAND 29.2 kW 9.2
Outdoor fan motor	Model Brand Input Speed (hi/lo)		YDK140-6N welling 230x1 735 / 530	YDK550-6E welling 810 / 680 850 / 750
Outdoor air flow		m3/h	3000	≥12000
water pipe	Water inlet pipe Water outlet pipe	mm mm	ØDN25 ØDN25	ØDN32 ØDN32
Wire controller			KJR-51/BMKE-A	KJR-51/BMKE-A
Hot Water Yield		m3/h	0.26	0.85

SEA INSTALLATION

Imperial Springs, Guang Zhou, China



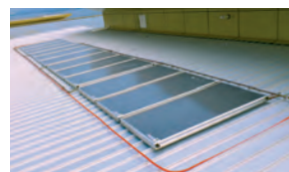
This project comes with a state-of-the-art conference centre, a boutique all suite hotel, private hot spring spa villas and the 6800 sq m Presidential Villa. There's also a luxurious Chinese imperial style clubhouse, China's first ever remote controlled buggies and "tee off villas" located near the first tee for the exclusive use of VIP golfers.

W Hotel, Bali, Indonesia



Dive into Bali's most sizzling resort, where the landscaped tropical WET® pool sets the scene for paradise. Work up a SWEAT® and wind down at AWAY® Spa, then dine decadently at our world-class restaurants before socializing away at our lounges.

M Suites Hotel, Johor Bahru, Malaysia



M Suites Hotel Johor offers 124 comfortable and spacious suites ranging from 500 to 1120 sq ft, and by far, the largest all-suites accommodation in Johor Bahru. The suites are tropically designed with a living and dining area with a kitchenette. Wireless broadband connectivity is available to enable guests to experience high-speed Internet access.

KLCC, Kuala Lumpur, Malaysia



The Kuala Lumpur Convention Centre is located in the Kuala Lumpur City Centre, fondly known as KLCC. Designed to be a "city within a city", this 40 hectare (100-acre) site includes the KLCC park and PETRONAS Twin Towers to lend a prestigious address to the Kuala Lumpur.

City Gas, Singapore



City Gas was established on 2nd January 2002 as a divested entity from PowerGas Ltd. Its core business is to focus on production of town gas and retail it island-wide to all residents as well as supply both town gas and natural gas to commercial and industrial sectors. At Senoko Gasworks, Gas Production is scheduled to meet daily demand. Gas consumption fluctuates over a 24-hour daily cycle with peak periods of high gas demand between 10am to 12 noon, and 5pm to 7pm. Our system is designed to cater the hot water shower demands for all staff at the Senoko Gasworks.

Mercure Hotel Bugis, Singapore



Mercure Hotel, located in the heart of Singapore city, is situated within walking distance to Bugis MRT Station, one of the most famous tourist spots in Singapore. The hotel offers 2 restaurants, an outdoor pool, and consists of 395 rooms.

System installed in Mercure Singapore is a hybrid system of EHP + Gas centralized hot water system.

Rinnai Holdings (Pacific) Pte Ltd
61 Ubi Road 1 #02-20 & 21
Oxley Bizhub
Singapore 408727

Tel : 67489011
Fax : 67459240
URL : www.rinnai.sg

Email:
Domestic & Commercial
Hot Water System
infinity@rinnai.sg

Rinnai Customer Service
service@rinnai.sg
[f rinnaiholdingspacific](https://www.facebook.com/rinnaiholdingspacific)



Rinnai
EXPERIENCE OUR INNOVATION

No.1 BRAND
IN JAPAN



ELECTRIC

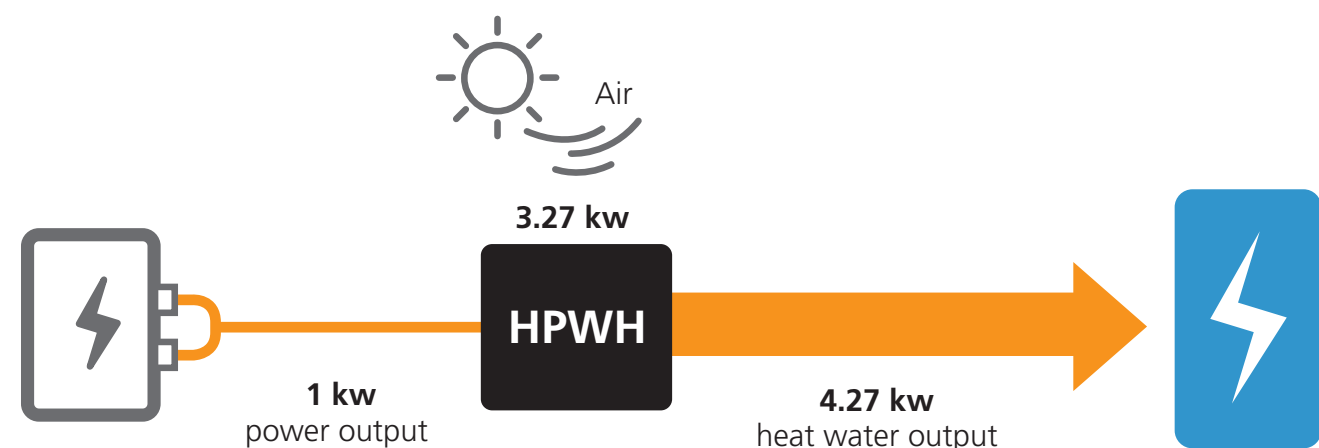
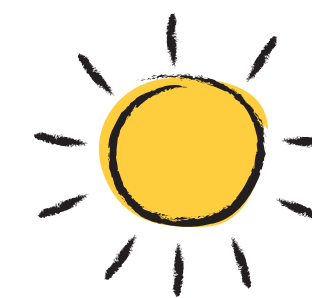


GAS ENERGY



SOLAR ENERGY

HYBRID HOT WATER SYSTEM

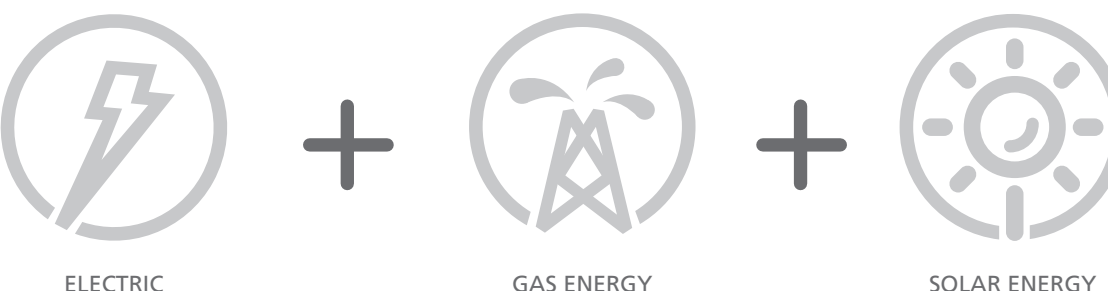
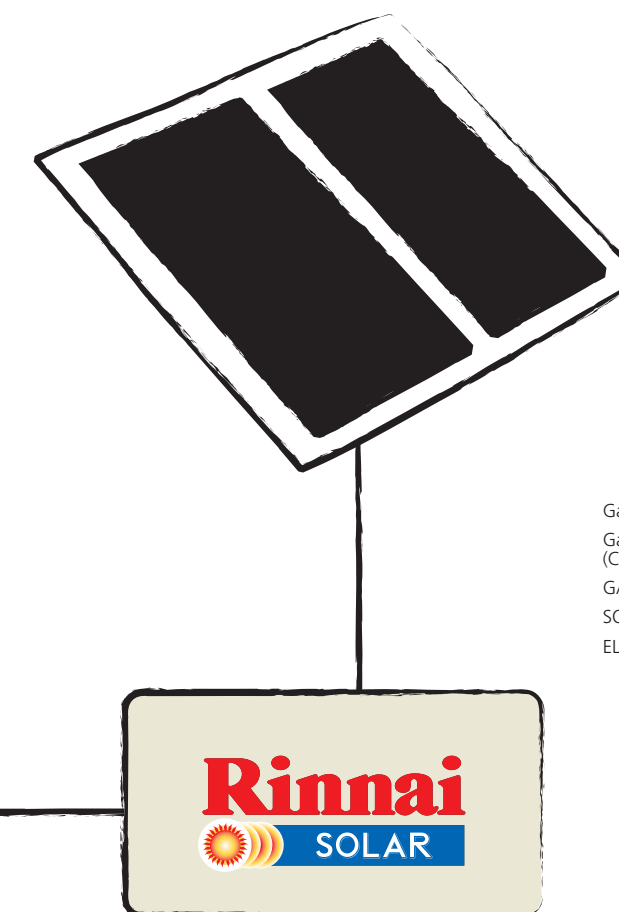
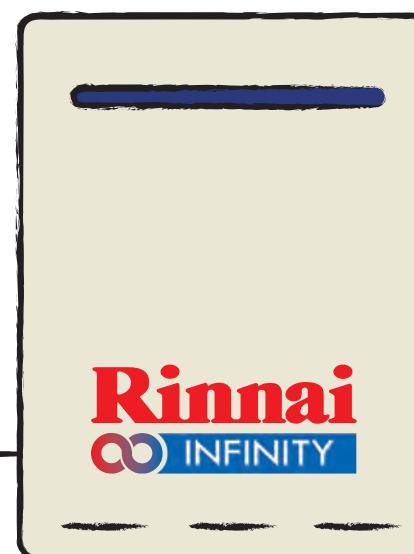
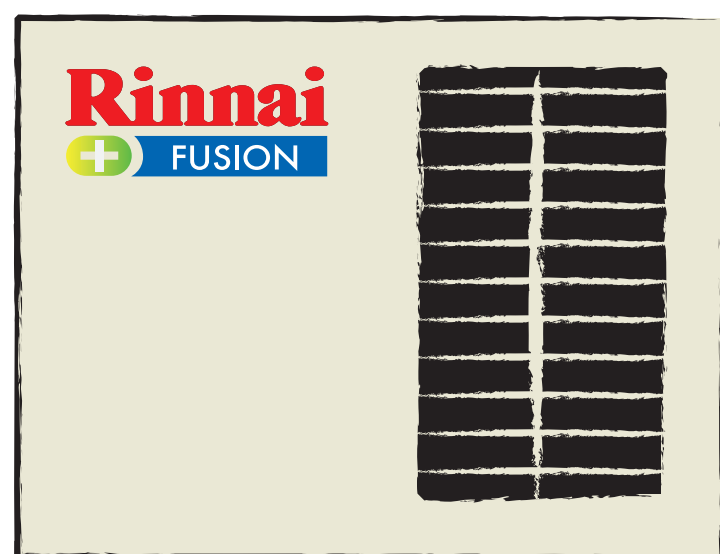


AIR SOURCE HEAT PUMP SERVICE

Heat pumps offer the most energy-efficient way to provide heating and cooling in many applications, as they can use renewable heat sources in our surroundings.

Even at temperatures we consider to be cold, air, ground and water contain useful heat that's continuously replenished by the sun.

Air source heat pump draw heat from outside air during the heating season and reject heat outside during the summer cooling season.

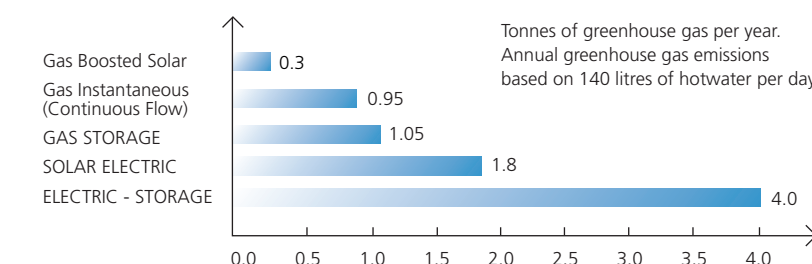


SOLAR HOT WATER

THE BENEFITS OF SOLAR HOT WATER

Producing hot water for the home has the largest impact on your energy bill in most homes. Using solar energy to heat your water can substantially reduce energy bills, even in colder climates, and will reduce the emission of Greenhouse Gases.

In most States replacing an electric water heater with a gas boosted solar water heater can reduce Greenhouse Gas emissions by approximately 3.7 tonnes per year, equivalent to taking a small car off the road.



Source: Global Warming - Cool it! Australian Greenhouse Office

WHEN DOES THE SOLAR WORK?

The Rinnai solar panels begin the process of gradually heating the water in the mornings as soon as the radiant heat from the sun is absorbed by the collectors on your roof. This continues throughout the day until late afternoon.

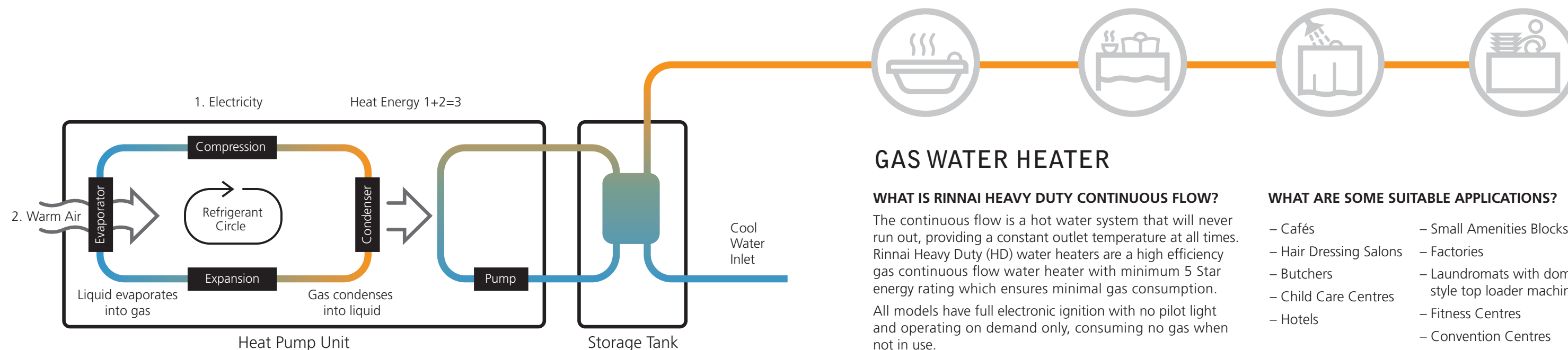
WHAT HAPPENS ON COLD, CLOUDY OR RAINY DAYS?

On cloudy and rainy days the solar gain is less, but the collectors still absorb heat. On these days the solar system will usually require the assistance of a booster to maintain the water at a suitable temperature.

ENVIRONMENTAL IMPACT

Booster selection and even the type of hot water system has an impact on the environment. The table opposite shows the approximate tonnes of greenhouse gas emissions for various systems.

If your system selection is based on environmental impact, your number one choice should always be a gas boosted solar system. A Rinnai INFINITY continuous flow (non-solar) hot water system is a second choice, as it generates around half the greenhouse emissions of an electric boosted solar system.



GAS WATER HEATER

WHAT IS RINNAI HEAVY DUTY CONTINUOUS FLOW?

The continuous flow is a hot water system that will never run out, providing a constant outlet temperature at all times. Rinnai Heavy Duty (HD) water heaters are a high efficiency gas continuous flow water heater with minimum 5 Star energy rating which ensures minimal gas consumption. All models have full electronic ignition with no pilot light and operating on demand only, consuming no gas when not in use.

WHAT ARE SOME SUITABLE APPLICATIONS?

- Cafés
- Hair Dressing Salons
- Butchers
- Child Care Centres
- Hotels
- Small Amenities Blocks
- Factories
- Laundromats with domestic style top loader machines
- Fitness Centres
- Convention Centres